

‘AAA-intro.ly’

# Introduction

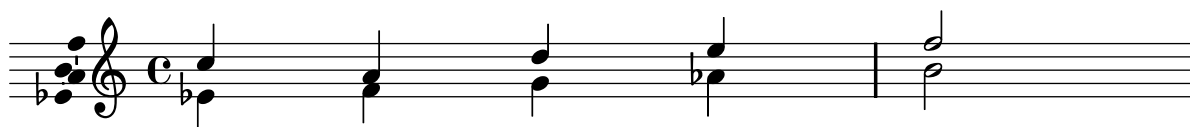
This document shows examples from the [LilyPond Snippet Repository](#).

In the web version of this document, you can click on the file name or figure for each example to see the corresponding input file.

**This document is for LilyPond version 2.11.28**

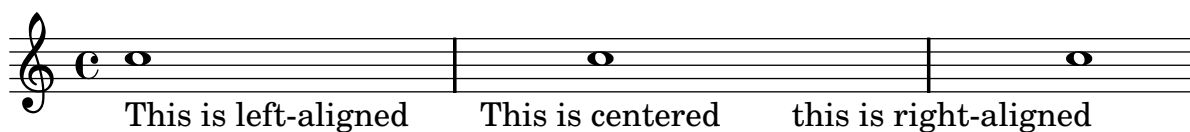
`‘adding-ambiti-per-voice.ly’`

Ambits can be added per voice. In that case, the ambitus must be moved manually to prevent collisions.



`‘aligning-lyrics.ly’`

You can specify different horizontal alignment for your lyrics, by overriding the `#’self-alignment-X` property of the `LyricText` object. `#-1` is left, `#0` is center and `#1` is right; however, you can use `#LEFT`, `#CENTER` and `#RIGHT` as well.



`‘ambitus.ly’`

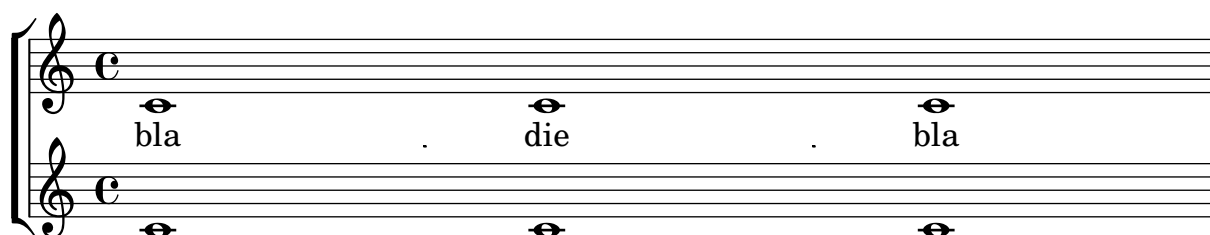
Ambituses indicate pitch ranges for voices.

Accidentals only show up if they’re not part of key signature. `AmbitusNoteHead` grobs also have ledger lines.



`‘displaying-bar-lines-on-lyrics.ly’`

You can move `Bar_engraver` and `Span_bar_engraver` to a different engraving context, if you want, for example, bar lines on lyrics.



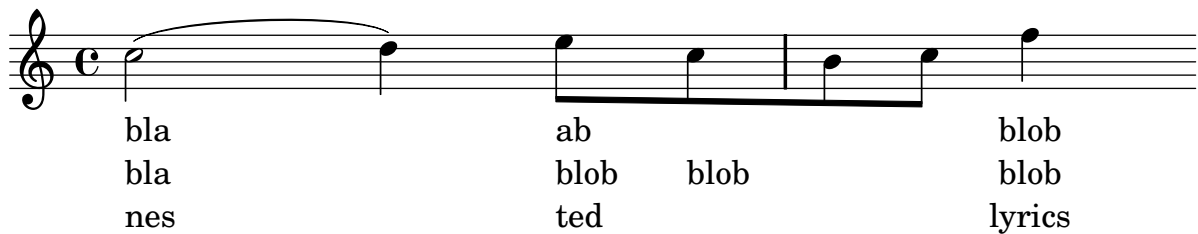
`'how-to-put-ties-between-syllables-in-lyrics.ly'`

This can be achieved by separating those syllables by tildes.

wa o a

`'lyric-combine.ly'`

With the `\lyricsto` mechanism, individual lyric lines can be associated with one melody line. For each lyric line, they can be tuned whether to follow melismata or not.



A musical staff in treble clef with a common time signature 'C'. The melody consists of several notes, some of which are tied across bar lines. Below the staff, three lines of lyrics are aligned with the notes: 'bla' and 'nes' under the first note, 'ab' and 'ted' under the second, and 'blob' and 'lyrics' under the third. The lyrics are arranged in a staggered fashion across three lines.

bla  
bla  
nes

ab  
blob  
ted

blob  
blob  
lyrics

`'vertical-brace-spanning-several-lyrics-lines.ly'`

This example shows a trick to insert a vertical brace when going from several stanzas into a common ending in the lyrics. (An alternative is of course to just skip the brace, especially if you add a line break instead).



A musical staff in treble clef with a common time signature 'C'. The melody consists of several notes, some of which are tied across bar lines. Below the staff, three lines of lyrics are aligned with the notes: 'Here is some ly - rics' on the first line, 'Here is some ly - rics' on the second line, and 'Here is some ly - rics' on the third line. A large vertical brace groups these three lines, and to the right of the brace, the text 'Here comes some more' is written.

Here is some ly - rics  
Here is some ly - rics  
Here is some ly - rics

} Here comes some more